



- Extra reinforced aluminium cast body through the heat treatment and industrial design
- Light and robust design
- 100% Holding negative-acting hydraulic brake system.
- Standard pressure roller and roller fairlead.
- Easy assembly, high rope capacity and high torque hydromotor
- Standard manual rope unloading system
- CE Machinery Directive 2006/42/EC
- Meets SAE J706 rating

## Specifications

<b>Max. pulling capacity (kg / lbs)</b>	: 5800 kg ( 12783 lbs )
<b>Max. rope length (m / ft)</b>	: 48.6 m ( 159.4 ft )
<b>Recommended wire rope (mm / in)</b>	: 12mm (1/2") 1960 Mpa
<b>Hydromotor (cc / in<sup>3</sup>)</b>	: 400 cc ( 24 in <sup>3</sup> )
<b>Max. pump flow (L / min - g / min)</b>	: 60 L/min ( 15.8 g/min )
<b>Gear ratio</b>	: 5,2 : 1
<b>Oil types and capacity</b>	: 85W 90 - 0,9 L
<b>Max. working pressure (bar / psi)</b>	: 160 bar (2320 psi)

### Winch : (kg / lbs )

78.5 kg (173 lbs)

### Roller Fairlead : ( kg / lbs )

9 kg ( lbs)

### Cable Tensioner ( kg / lbs)

4 kg (9 lbs)

### Mounting Bolts

16 pieces M12

### Standards

Cable tensioner  
Roller Fairlead  
Manual Clutch

### Optional

Air Clutch  
IP67 - IP 68

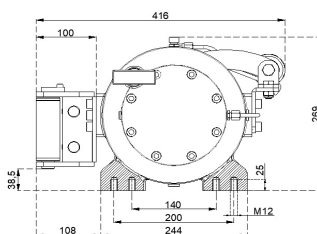
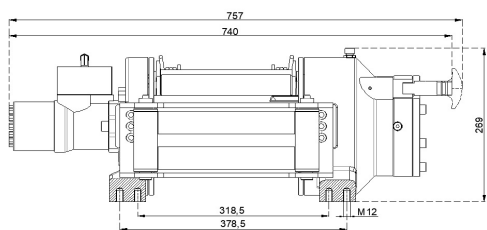
### Hydraulic Inlets

G 1/2"

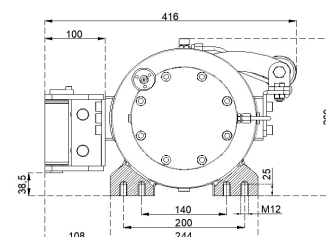
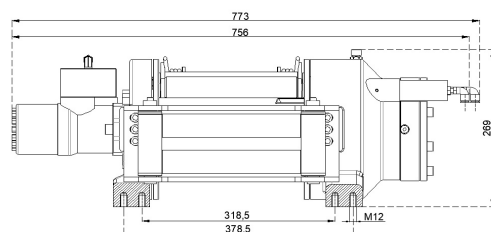
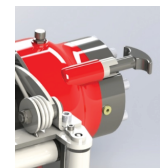
Rope Winding Layer	Pulling Capacity kg / lbs	Rope Speed m / min - ft / min	Rope Length m / ft
1	5800 kg / 12783 lbs	10 m/min - 33 ft/min	7.35m / 24.1 ft
2	4927 kg / 10861 lbs	12 m/min - 39 ft/min	15.7m / 51.5 ft
3	4283 kg / 9440 lbs	14 m/min - 46 ft/min	25.3m / 83 ft
4	3788 kg / 8349 lbs	16 m/min - 52 ft/min	36m / 118 ft
5	3395 kg / 7483 lbs	17 m/min - 56 ft/min	48.6m / 159.4 ft

### Warning !

- Before operating the winch, A-B lines must be open to T line (tank line) of the control valve in center position.
- This winch is designed and manufactured for pulling, don't lift person or material.
- Always keep last 5 wrap on the drum.
- The technical details given above are just for information.
- HAMMER WINCH keeps the right to change the technical details.
- Pneumatic Working Pressure: Min 9 bar - Max 12 bar (Min 130psi - Max 174 psi)



Manual Clutch



Air Clutch

